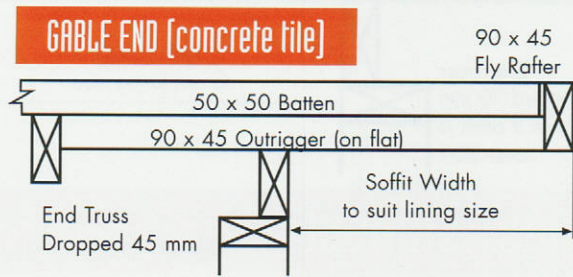
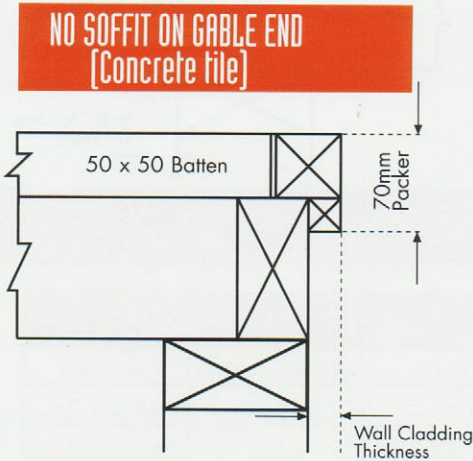
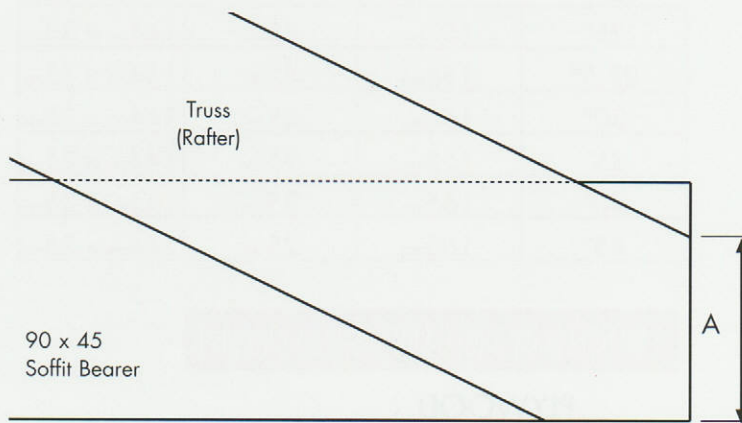


Phone: 09 267 5960 • Fax: 09 267 5961  
 PO Box 75029 • Manurewa 2243 • New Zealand  
 sales@woodfascia.co.nz • www.woodfascia.co.nz

### CONCRETE TILE ROOF



#### SOFFIT DROP



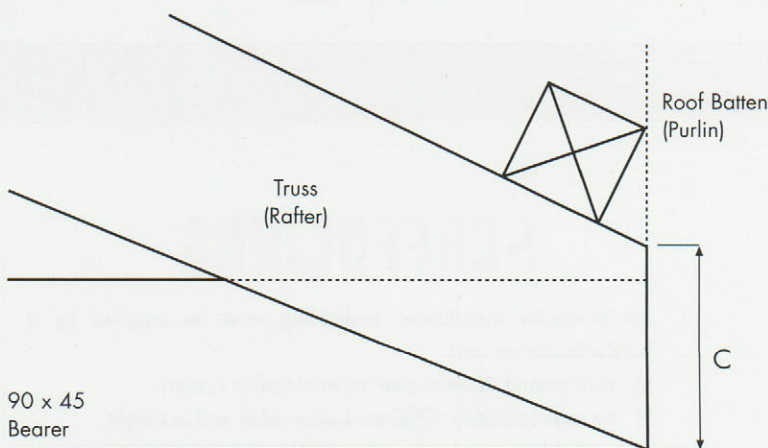
SOFFIT DROP	
Pitch	Dim A
15°	50mm
17.5°	50mm
20°	50mm
22.5°	50mm
25°	50mm
27.5°	55mm
30°	55mm
35°	60mm
40°	60mm
45°	65mm

• NOTE: LAST ROOF BATTEN AND PACKER ARE NOT REQUIRED FOR CONCRETE TILE ROOFS

• SOFFIT BEARERS 90 x 45 fix to RIGHT HAND SIDE looking at building. 90 x 45 Soffit Bearers used unless stated.

### METAL TILE / LONGRUN ROOF

#### SOFFIT DROP



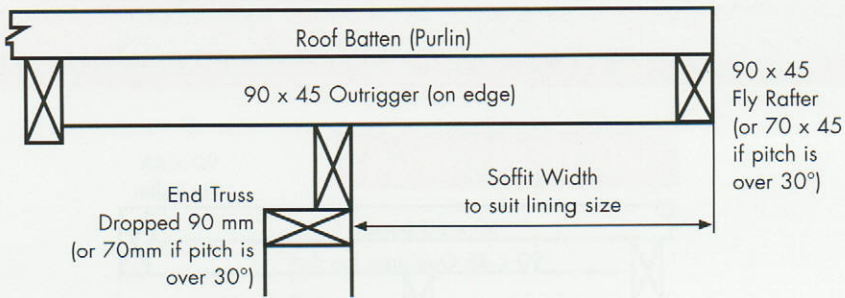
	SOFFIT DROP	
	Pitch	Dim C
90x45 Fly Rafter on Gable Ends	15°	95mm
	17.5°	98mm
	20°	100mm
	22.5°	103mm
	25°	103mm
	27.5°	105mm
	30°	107mm
70x45 Fly Rafter on Gable Ends	35°	88mm
	40°	92mm
	45°	96mm

• NOTE: LAST ROOF BATTEN IS REQUIRED FOR ALL METAL TILE AND LONGRUN ROOFS.

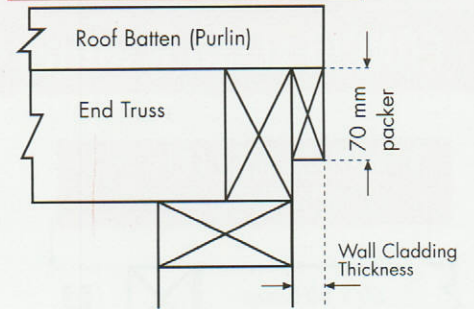
• SOFFIT BEARERS 90 x 45 fix to RIGHT HAND SIDE looking at building. 90 x 45 Soffit Bearers used unless stated.

# METAL TILE / LONGRUN ROOF

## GABLE END (metal/longrun)

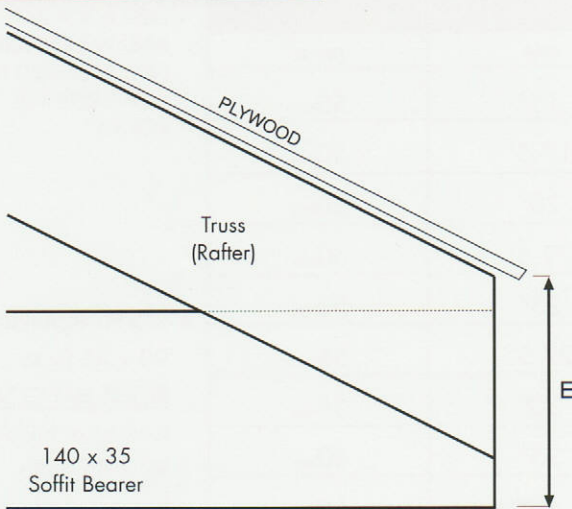


## NO SOFFIT ON GABLE END (metal/longrun)



# ASPHALT SHINGLE

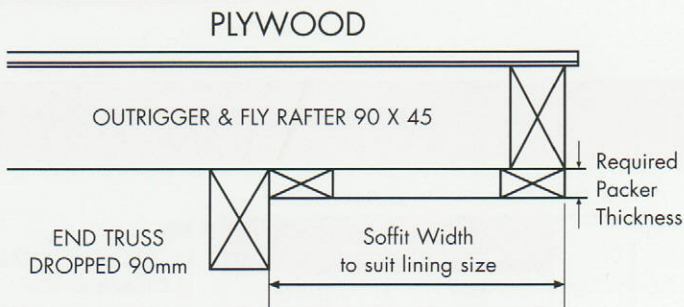
## SOFFIT DROP



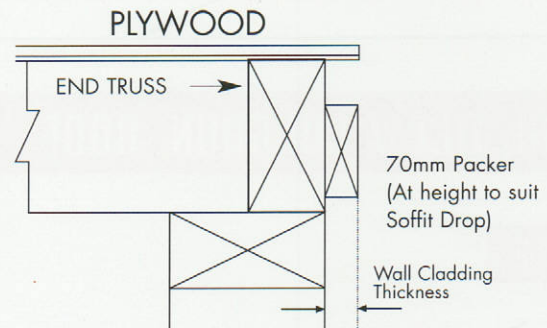
## SOFFIT DROP

Pitch	Dim E	Soffit Packer Thickness	Bearer Size
15°	145 <sub>mm</sub>	45 <sub>mm</sub>	144 <sub>mm</sub> x 35 <sub>mm</sub>
17.5°	145 <sub>mm</sub>	45 <sub>mm</sub>	144 <sub>mm</sub> x 35 <sub>mm</sub>
20°	145 <sub>mm</sub>	45 <sub>mm</sub>	144 <sub>mm</sub> x 35 <sub>mm</sub>
22.5°	147 <sub>mm</sub>	45 <sub>mm</sub>	144 <sub>mm</sub> x 35 <sub>mm</sub>
25°	152 <sub>mm</sub>	45 <sub>mm</sub>	144 <sub>mm</sub> x 35 <sub>mm</sub>
27.5°	155 <sub>mm</sub>	45 <sub>mm</sub>	144 <sub>mm</sub> x 35 <sub>mm</sub>
30°	160 <sub>mm</sub>	45 <sub>mm</sub>	144 <sub>mm</sub> x 35 <sub>mm</sub>
35°	158 <sub>mm</sub>	35 <sub>mm</sub>	144 <sub>mm</sub> x 35 <sub>mm</sub>
40°	165 <sub>mm</sub>	35 <sub>mm</sub>	144 <sub>mm</sub> x 35 <sub>mm</sub>
45°	165 <sub>mm</sub>	25 <sub>mm</sub>	144 <sub>mm</sub> x 35 <sub>mm</sub>

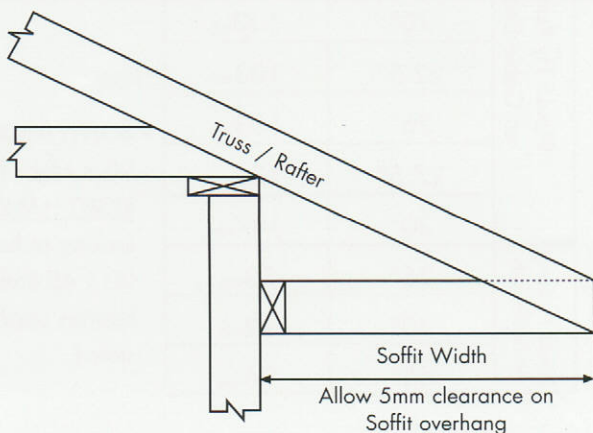
## GABLE END (asphalt shingle)



## NO SOFFIT ON GABLE END (asphalt shingle)



# SOFFIT WIDTH (for all roof types)



# SCAFFOLDING

- For a quality installation, scaffolding must be supplied by a builder/customer and
  - must extend 500mm past external/gable corners.
  - be approximately 1700mm below rafter end in height.
  - scaffolding must be erected to OSH safety standards.